



**Opportunities for  
Downstream Chemicals & Renewable Fuels**



## ACCESS TO KEY FEEDSTOCKS

Ascension Parish, LA, located just south of Baton Rouge, is home to more than twenty chemical and related operations along the Mississippi River. Many operations have available land on-site for co-location opportunities with key feedstocks and access to water, steam, natural gas, rail, electrical, and wastewater treatment.

The Parish is serviced by Interstate-10 with five exits. Rail is serviced by three rail providers: Canadian National, Kansas City Southern, and Union Pacific.

Three deepwater ports service the area within sixty miles including the Port of Greater Baton Rouge, the Port of South LA, and the Port of New Orleans. Dozens of pipelines with diverse products encircle the Parish.

## SITE SELECTION ASSISTANCE

AEDC can assist companies in locating available feedstocks at local plants and in determining strategic co-locations opportunities utilizing state-of-the-art GIS mapping technology to pinpoint available products and parcels for development. AEDC will also coordinate with local plant officials on available streams.

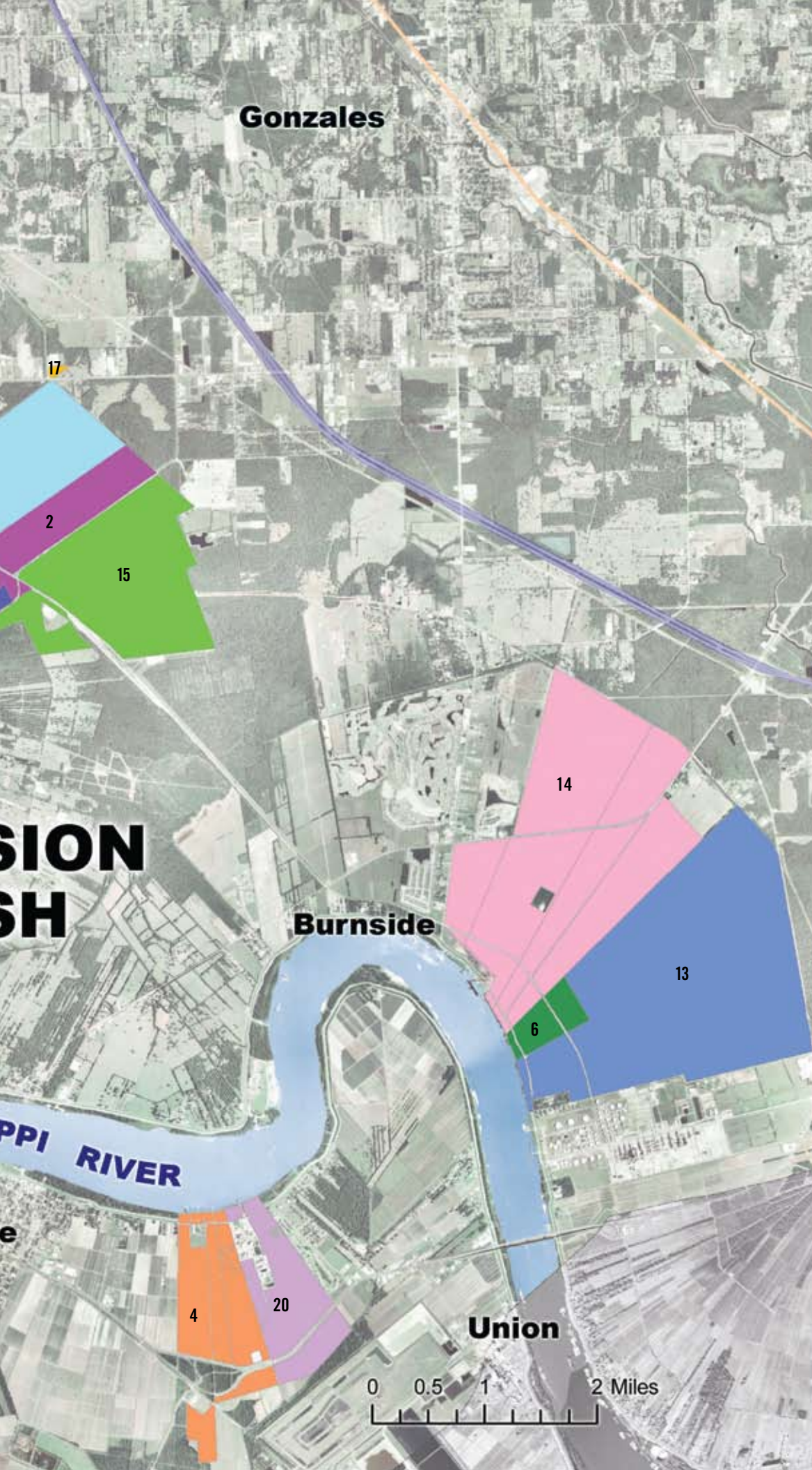
## PRODUCTS MADE IN ASCENSION PARISH, LOUISIANA

Acetic Acid	Diethylene Glycol	Nitrogen Fertilizer Solutions
Acetylene	Di-Tab Phosphate Salts	n-methyl Pyrrolidone
Al Trihydrate	DNT	Perchloroethylene
Alkylation	EDC	Phosgene
Alpha Olefins	Ethanolamines	Phosphoric Acid
Alternative Refrigerants	Ethocylates	Poly THF
Alumina	Ethox	Polymers
Aluminum Flouride	Ethylene	Poly-N Polyphosphate Solutions
Amines	Ethylene Glycol	Polyos
Ammonia	Ethylene Oxide	Precipitation Filtration
Ammonium Nitrate	F Carbons	Propylene
Aniline	Flexzone	PVC
Aniline II	Foaming Agents	Resid & Other
Argon	Phosphoric Acid	Royalene EPDM
A-Tab Phosphate	Formaldehyde	SHF
B-Nine	Genetron	Sodium Aluminate
Butadiene Concentrate	Glyoxal Mix	Solid Polyurethanes
Butanediol	HC1	Sulfur
Butyrolactone	HC	Sulfur Trioxide
Gypsum	Heavy Aromatics	Sulfuric Acid
By-Product HCL	HF - Anhydrous	Surfactants
Calcium Sulfate	Hydrochloric Acid	Synthesis Gas
Carbon Dioxide	Hydrogen	TDI
Carbon Monoxide	Jet Fuel	THF
Carilon Polymers	Light Fuels	Thiazols
Catalysts Pigments	Linear Alcohols	Thrichloroethylene
Caustic	Maleic Hydrazine (MH)	Toulene
Celogen	MDI	Tri-tab Phosphate
Chloroform	MDI II	UAN Solutions
Chlroine	Methanol	URAN
CO	Methylene Chloride	Urea
Corterra Carpet	Morpholine	VAM
CTFE Polymer	MPP	Vinyl Chloride Monomer (VCM)
DAP	Nitric Acid	Vinyl Esters
Diesel Fuel	Nitrogen	

Sources: AEDC interviews and Homesite. ©2008



# ASCENSION PARISH



## ASCENSION PARISH CHEMICAL PLANTS

- 1 Air Liquide
- 2 Shell Chemical
- 3 BASF
- 4 CF Industries
- 5 Dynamic Fuels (Biofuels)
- 6 DuPont
- 7 Gulf Liquids
- 8 Hexion
- 9 Honeywell
- 10 Huntsman
- 11 Innophos
- 12 Lion Copolymer
- 13 Motiva
- 14 Ormet
- 15 OxyChem
- 16 PCS Nitrogen
- 17 Praxair
- 18 Rubicon
- 19 Air Products
- 20 Terra Industries
- 21 Westlake
- 22 Williams Olefins

## FINANCIAL INCENTIVES

### ENTERPRISE ZONE PROGRAM

Louisiana's Enterprise Zone Program provides tax credits and other incentives to businesses hiring from within officially designated Enterprise Zones. EZs are urban or rural areas of high unemployment, low income, and/or where a large number of residents are receiving some form of public assistance.

### INDUSTRIAL PROPERTY TAX EXEMPTION PROGRAM

Louisiana's Industrial Property Tax Exemption Program exempts new manufacturing facilities and expansions from state, parish and local property taxes for up to ten years. Program benefits can be combined with those of other programs, such as the Enterprise Zone or Quality Jobs programs.

### QUALITY JOBS PROGRAM

Louisiana's Quality Jobs Program grants businesses engaged in manufacturing or other basic industries cash rebates up to 6% of annual gross payroll for up to ten years. The program can be used in conjunction with the Industrial Property Tax Exemption Program.

### ECONOMIC DEVELOPMENT ASSISTANCE PROGRAM (EDAP)

This program, administered by the Louisiana Department of Economic Development provides grants for publicly owned infrastructure to assist industrial or business development projects that promote economic development and that require state assistance.

### GOVERNOR'S RAPID RESPONSE FUND

A \$10 million fund has been established by the Governor's office that can be quickly accessed for incentives that will help locate projects within the State including downstream chemical projects.

## INDUSTRY ASSOCIATIONS

### LOUISIANA CHEMICAL ASSOCIATION (LCA)

The chemical industry is well represented in the State of Louisiana by the Louisiana Chemical Association in key policy issues affecting the industry and in workforce development initiatives such as the PTECH program at local and community colleges which prepares students for work in the technology-changing chemical sector. [www.lca.org](http://www.lca.org)

### LOUISIANA CHEMICAL INDUSTRY ALLIANCE(LCIA)

The LCIA represents the interests of the support industries within the chemical and construction start maintenance sectors and works closely with the chemical industry officials on workforce and business climate issues.



6967 Highway 22 • Sorrento, LA 70778

[www.ascensionedc.com](http://www.ascensionedc.com)

Phone: 225-675-1750

Fax: 225-675-1751